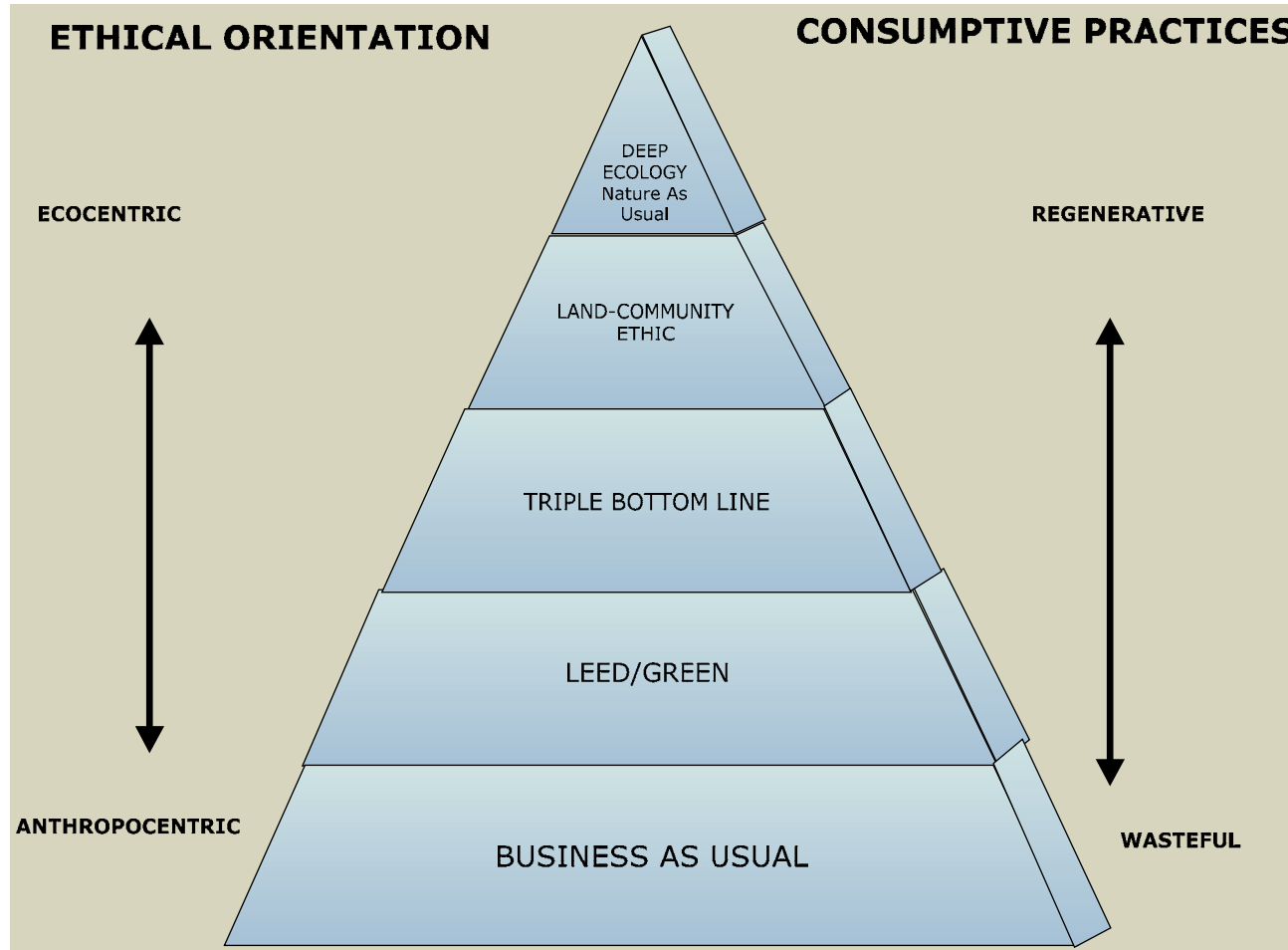


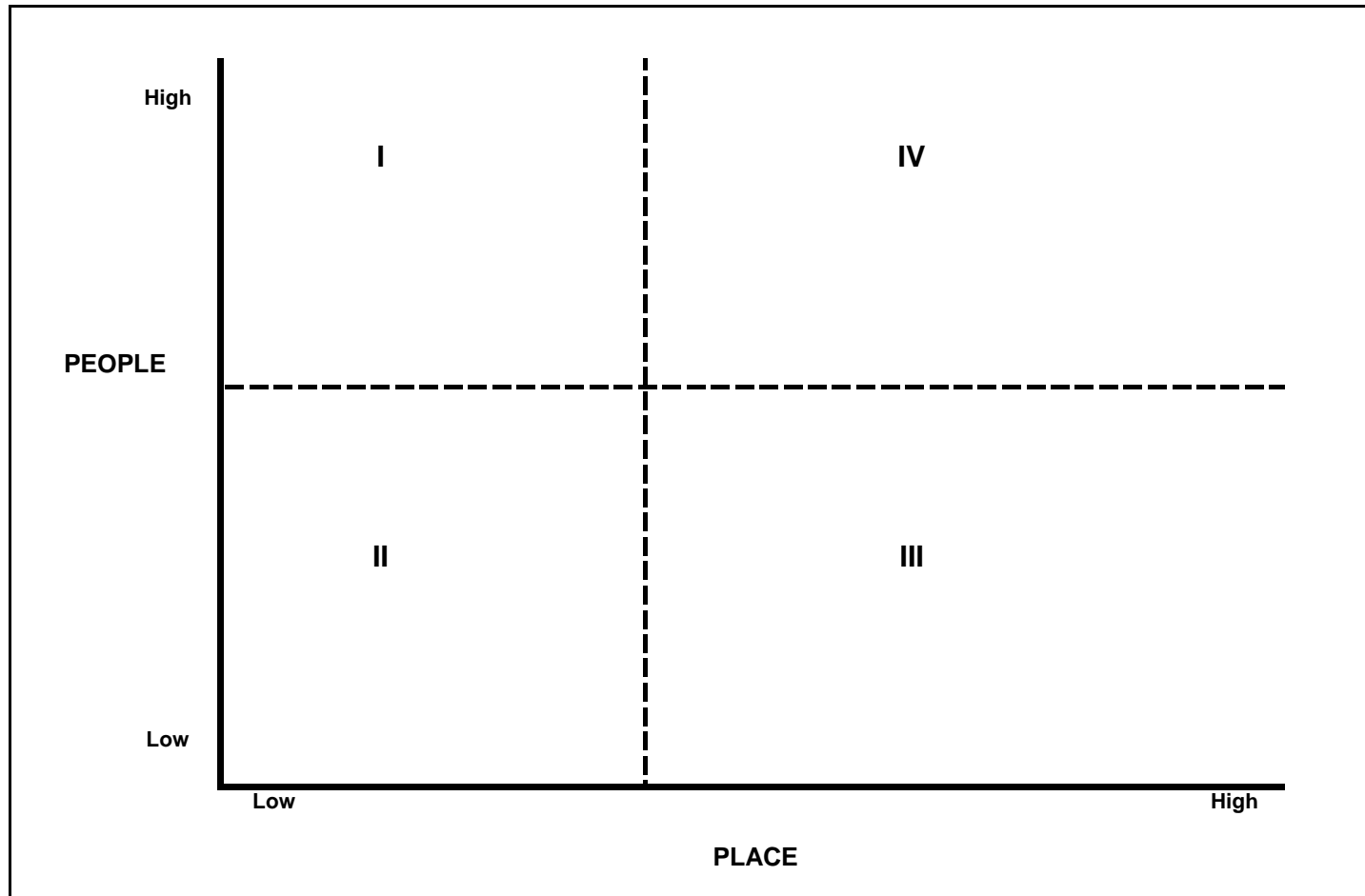
# MEASURING SUSTAINABILITY



# TOOL #1: THE SUSTAINABILITY PYRAMID



# TOOL #2: TAKING STOCK



# TOOL #3 : HALL-TONNA SCHEMA

Stages	1: Safety	2: Security	3: Family	4: Institution	5: Vocation	6: New Order	7: Wisdom	8: World Order
Goals Values								
Means Values								
Value Cluster	FOUNDATION			FOCUS		VISION		
Leadership Style	AUTHORITARIAN	PATERNALIST	MANAGER	FACILITATOR	COLLABORATOR	SERVANT	VISIONARY	VISIONARY

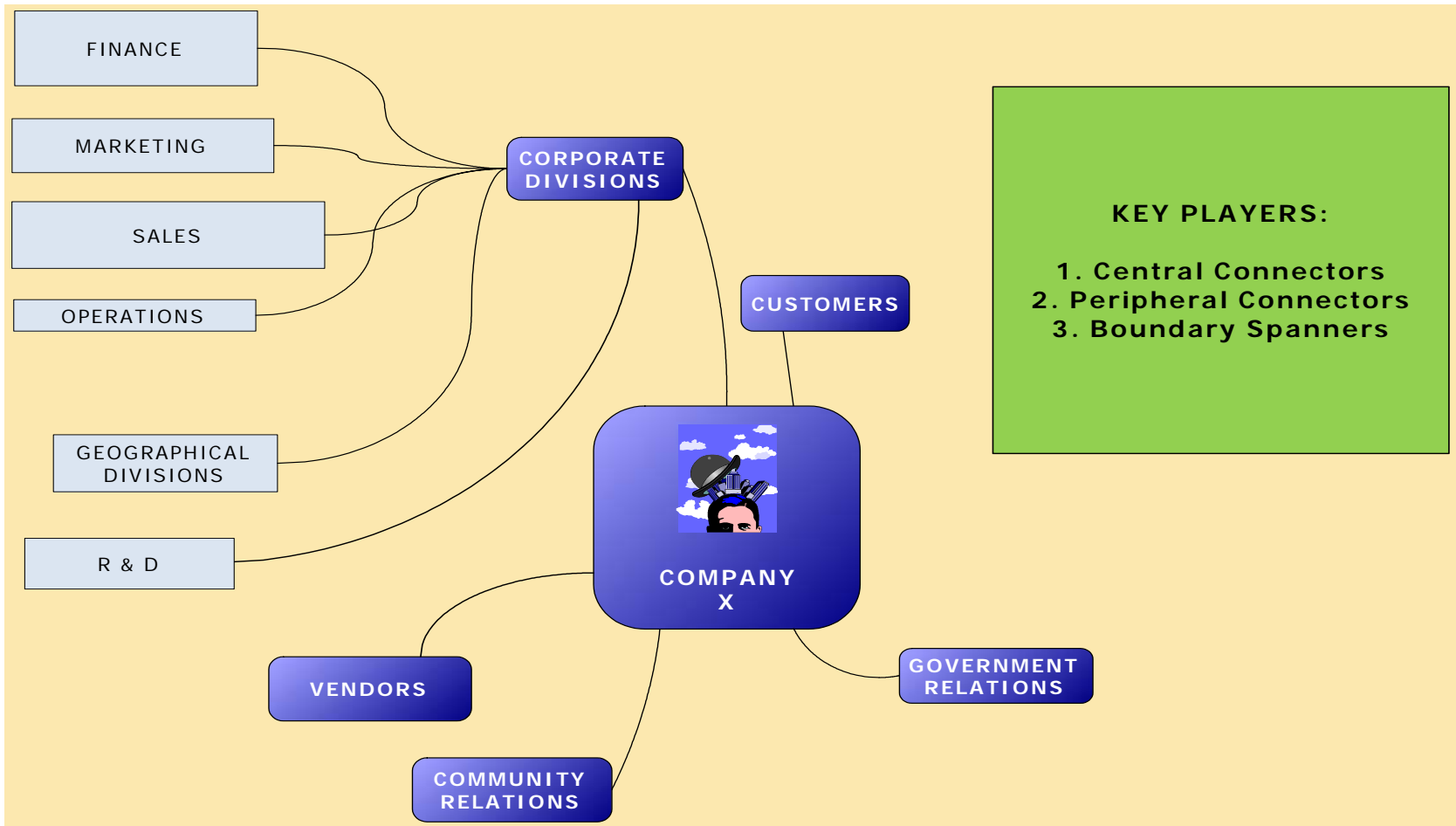
# TOOL #3: HALL-TONNA @ MELAVER

Stages	2: SECURITY	3: FAMILY	4: INSTITUTION	5: VOCATION	6: NEW ORDER	7: WISDOM
<b>Goals Values</b>	Security (28)	Family/ Belonging (70)	Belief/ Philosophy (82)	Equality/ Liberation (42)	Knowledge/ Insight (40)	Truth/ Wisdom (25)
		Self Worth (48)	Play/ Recreation (55)	Integration/ Wholeness (27)	Being Self (35)	
			Work/ Wealth/ Value (53)	Self Actualization (39)	Construction/ New Order (21)	
			Competence & Confidence (34)		Faith/ Risk/ Vision (18)	
<b>Means Values</b>		Courtesy & Hospitality (40)	Responsibility (75)	Sharing/ Listening/ Trust (59)	Accountability/ Ethics (66)	
		Social Affirmation (40)	Efficiency/ Planning (59)	Adaptability/ Flexibility (58)	Limitation/ Celebration (54)	
			Loyalty/ Fidelity (59)	Quality/ Evaluation (45)	Detachment/ Solitude (48)	
			Productivity (54)	Search/ Meaning/ Hope (44)		
			Duty/ Obligation (47)	Relaxation (40)		
			Ownership (47)			
			Reason (46)			
			Achievement/ Success (43)			
<b>Value Cluster</b>	FOUNDATION		FOCUS		VISION	
<b>Leadership Style</b>	PATERNALIST	MANAGER	FACILITATOR	COLLABORATOR	SERVANT	VISIONARY

# TOOL #4: DIALECTICAL PROCESS MAP

	<b>FORCE-FIELD ANALYSIS</b>	<b>DIALECTICAL PROCESS</b>
	Drivers      Resistors	Thesis      Antithesis
<b>Stakeholders</b>		
<b>Systems</b>		
<b>Situation</b>		

# TOOL #5: CULTIVATE BOUNDARY SPANNERS



# TOOL # 6: THREE PERFORMANCE ORGANIZERS

3-PO Headings	3-PO Criteria
Financial Performance	Total return: Fee income: Financing: Incentives: Time & Risk
Environmental Impact	Carbon emissions: Nature of the site Infrastructure: Potential for re-use: Natural features & Consumption of Natural Capital Waste: What are the upstream and downstream consequences of this project?
Social Consequences	Alignment of Partners Extending the circle & Ripple Effect Addressing needs: Equity, Equality, & Diversity: Social imbalances Diversity Educational outreach & Advocacy Aesthetics

# PULLING THE TOOLS TOGETHER: FELLWOOD

