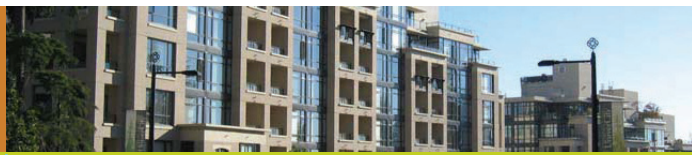


Speaker series includes:



Agenda



Gordon Harris, CEO of Simon Fraser University Community Trust, the developer of www.UniverCity.ca

Gordon Harris is the president and developer of UniverCity, the sustainable urban community on Burnaby Mountain. Prior to joining the UniverCity, Gordon held a distinguished career as a well-respected Vancouver based professional urban planner. He is recognized as one of

Canada's leading providers of market-based economic analysis and strategic planning support to local governments and the private sector. His professional planning work in BC, Alberta, and Ontario has earned awards from the Canadian Institute of Planners, the Planning Institute of BC, and the Alberta Association of Planners. Under Gordon's leadership, SFU Community Trust is making significant and innovative contributions toward the creation of independent and universal green building standards, promoting complete communities, increasing transportation choices, and enhancing the overall quality of the urban environment.



Mark Huppert, Chief Community Development Officer, The McNaughton Group, LLC

As a Pacific Northwest developer and consultant for the last decade, Mark has led numerous teams in creating urban-infill developments that continually explore the balance between livability and resource conservation. He has leveraged over \$100 Million in private capital through public-

private partnerships to accomplish ambitious social purpose and public policy objectives, including affordable housing development, community redevelopment and historic preservation. His teams' redevelopment projects have included converting the attic of a convent into affordable artists' lofts, turning a decrepit hospital into urban condos, and transforming the historic Cadillac Hotel in Seattle's Pioneer Square, which was badly damaged in the Nisqually earthquake, into the Seattle Visitor Center for the Klondike Gold Rush National Park. Mark is a past board member of the Cascadia Chapter of the U.S. Green Building Council and has joined the Executive Council of ULI Seattle in 2008.



Jeff Pavey, Director of Sustainable Communities Program, Cascade Land Conservancy

Jeff has been at CLC since 2004 and is currently the Cascade Agenda Program Director. Jeff's work focuses on the development of effective planning tools necessary to create vibrant, livable communities throughout the region, while conserving working farms, forests and

natural areas. Before coming to work for CLC, Jeff was a consultant conducting policy analysis and coordinating projects for a variety of private and non-profit organizations. Jeff is a published writer, an experienced mediator, and holds Master in Public Administration from Indiana University School of Public and Environmental Affairs.

Sustainable Connections Green Building & Smart Growth program is focused on finding common ground among diverse perspectives and forging consensus on issues related to land use policy and practice.

Help Sustainable Connections and partnering organizations like the Port of Bellingham, Cascadia Green Building Council, Whatcom Transit Authority, City of Bellingham and leading private sector development firms promote sustainable development that adds long-term economic, environmental and social value to our community.



is a non-profit membership organization of 600+ NW Washington business and community leaders working to transform and model an economy built on sustainable practices. We envision business practices that lead to **Strong Community, Healthy Environment, Meaningful Employment, and Buying Local First** as commonplace in our region and a model for the rest of the world.

(See www.sconnect.org for up-to-date schedule details)

- 8:00** Registration opens
- 8:30** Welcome
- 9:00** **Keynote by Gordon Harris - www.UniverCity.ca**
Simon Fraser University's master planned sustainable community won the 2008 National Planning Excellence Award for Innovation in Green Community Planning.
- 10:15** Break
- 10:30** **The Cascade Agenda: A New Approach to Urban Growth and Rural Conservation, Jeff Pavey**
Market-based approach to land use and conservation including opportunities/barriers to a successful Transfer of Development Right Program
- 12:00** Lunch & Networking with Ciao Thyme
- 1:30** **The Fast Fifteen: 15 minute updates on the most important initiatives in Whatcom County**
 - Farmland Preservation in Whatcom County
 - Planning Academy II
 - WTA & Smart Trips
 - Countywide Affordable Housing Task Force
 - Stormwater Management on Brownfield Sites
- 2:30** Break
- 2:45** **Development Economics, Mark Huppert**
Explore the benefits of public/private partnerships, market success stories, creative public financing and key incentives and relationships to making urban development work.
- 4:00** **Reality Check - Is Whatcom County Ready for this in 2009?**
Join the Urban Land Institute as we discuss a proven process for building a regional vision for Whatcom County that embraces and acts upon the goals of smart growth. Build consensus among the industry and public leaders who influence land use, zoning, transportation, environmental and economic development policies and practices.
- 5:00** Happy Hour

